

# REFLEXCUT

## High Quality Reflective film with an adhesive liner

ReflexCut is a high visibility heat transfer reflective film!

ReflexCut is very easy to cut and weed because of its adhesive liner. ReflexCut is EN ISO 20471 certified.

### FEATURES

Thickness (without liner): 90  $\mu$

Washing Fastness: 60 °C

Transfer Temperature: 150 °C

Transfer Time: 15 seconds

Pressure: Medium

Cold-peel

### ► PACKAGING



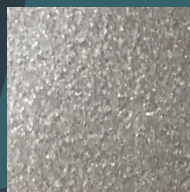
50 cm (19,7") 5 meters (5,45 yd)

50 cm (19,7") 10 meters (10,9 yd)

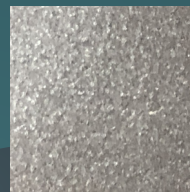
50 cm (19,7") 25 meters (27.3 yd)

### AVAILABLE COLOURS

#### ► THIS PRODUCT MEETS EN471 CLASS2

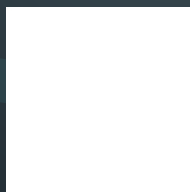


*Silver 1*

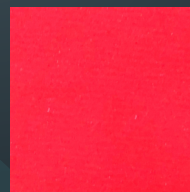


*FR 9 (Flame Retardant)*

#### ► OTHER COLOURS



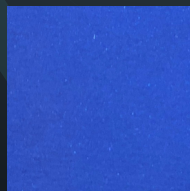
*White 2*



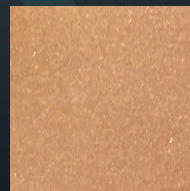
*Red 3*



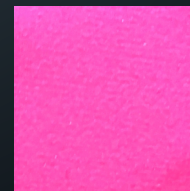
*Neon Yellow 4*



*Blue 5*



*Gold 6*



*Neon Pink 7*



*Black 8*